

ISUZU Real Deals

ISUZU
RELIABILITY IS EVERYTHING

APRIL / MAY / JUNE 2025



PAGE 3
Injector Kits



PAGE 5 & 9
Batteries

ISUZU
PARTS

Prices published are recommended selling prices, include GST and are effective 1st April 2025 until 30th June 2025. While stocks last. Images are for illustrative purposes only. All parts advertised have been included in good faith and on the basis that those parts will be available at participating Isuzu Dealerships at the time of publication. Isuzu and participating Dealers reserve the right to correct any errors made in parts listed and/or the pricing published.



Scan QR
code for an
e-version of
Real Deals

Qantas Business Rewards Trade Mate

Thanks to our partnership with Qantas Business Rewards, your business can earn Qantas Points as an Isuzu Trade Mate*. When you become an Isuzu Trade Mate member your business will earn 1 Qantas Point for every dollar you spend on eligible Isuzu Truck parts or accessories purchased from participating authorised Isuzu Dealers.

Apply now to earn Qantas Points for your business*.

*Terms and Conditions apply.



To find out more scan the code or visit parts.isuzu.com.au/isuzu-trade-program

Reward your business for purchasing Isuzu Truck parts and accessories...

Your business can use Qantas Points earned on a range of rewards including booking flights, upgrades and more. Or you can transfer your business's Qantas Points to any Qantas Frequent Flyer account to use on car hire, hotels, wine or choose from over 20,000 products at the Qantas Marketplace*.



QANTAS BUSINESS REWARDS

Earn Triple Qantas Points on every Injector Kit Purchased.



Members of the Qantas Business Rewards program are eligible to earn triple Qantas Points when they purchase any advertised Injector Kits from Real Deals Q2 between 1 April and 30 June 2025, 3 points per dollar spent.

To redeem your bonus Qantas Points, please scan the below QR code or go to parts.isuzu.com.au/isuzu-trade-program/real-deals-qbr-promotion and complete the form to ensure that the points are credited to your Qantas Business Rewards account.



4 Cylinder Injector Kits

92959369 N Series 4JJ1 Feb 2012 - Current **\$2,480.65**

Includes, 4 x 8980749093, 4 x 909566110, 4 x 8981815400, 3 x 8983452300, 1 x 8983452490, 4 x 1096390340 & 1 x 8979453380

92959370 F Series 4HK1 Oct 2007 - Dec 2015
N Series 4HK1 Feb 2005 - Jan 2018 **\$2,462.25**

Includes- 4 x 8976097887, 4 x 8980659920, 4 x 8941734120, 4 x 8980792480, 4 x 1096390340 & 1 x 8978454830

92959371 F Series - 4HK1 Jan 2016 - Current **\$2,699.60**

Includes - 4 x 8983107950, 4 x 8980659920, 4 x 8941734120, 4 x 8982681151, 4 x 1096390340 & 1 x 8978454830

6 Cylinder Injector Kits

92959372 FR/FS/FT 6HK1 Sept 07 - Sept - 2022
(Excluding DOC emission system) **\$3,412.00**

Includes - 6 x 8976097887, 6 x 8980659920, 1 x 8980797550, 6 x 8941734120, 6 x 8980792480, 6 x 1096390340 & 1 x 8943913791

92959373 FV 6HK1 Feb - 2013 - Oct 2015
& Nov 2021 - Current **\$3,387.30**

Includes - 6 x 8981211632, 6 x 8980659920, 1 x 8982313931, 6 x 8941734120, 6 x 8980792480, 6 x 1096390340 & 1 x 8943913791

92959374 FX/FY 6UZ1 - Dec 12 - Current Euro 5 **\$3,318.55**

Includes - 6 x 8981402493, 6 x 8980659920, 1 x 8980659930, 6 x 1096390340, 1 x 1111731180

N-SERIES

Genuine Parts

For genuine peace of mind, maintain your Isuzu N-Series Truck by using Isuzu Genuine Parts which are developed and manufactured to stringent quality standards, providing you with maximum productivity, performance, and future re-sale value. All backed by a 12-month unlimited kilometre parts-only warranty, or 3-year unlimited kilometres parts & labour warranty when fitted by an authorised Isuzu Trucks dealer, because reliability is everything!

Front Panels

8981226920	NL*/NM* MY2008-Current	\$485.00
8981226950	NN*/NP*/NQ* MY2008-Current	\$687.40

*Applies to all models in range.

Corner Panels

8974060399	N Series MY2008-2021 - RHS	\$219.70
8974060409	N Series MY2008-2021 - LHS	\$219.70
8974774711	N-Series MY2022-Current - RHS	\$210.45
8974774801	N-Series MY2022-Current - LHS	\$210.45

Radiator Grilles

8974293721	NL*/NM* MY2015-Current - White	\$417.50
8974289771	NN*/NP*/NQ* MY2015-Current - White	\$450.15
8982410711	NN*/NP*/NQ* 2015-current - Chrome	\$325.15

*Applies to all models in range.

Front Bumpers

8974068204	NL*/NM* MY2008-Current	\$444.10
8974056355	NN*/NP*/NQ* MY2008-Current (excluding Foglamps)	\$439.90
8974056285	NN*/NP*/NQ* MY2008-Current with Foglamps	\$452.85

*Applies to all models in range.



Brake Shoe Kits & Drums (each)

5878323750	NPS MY2008-Current Steer Axle Shoe Kit (includes 4 x Shoes 8983485800)	\$509.15
5878317750	NPS MY2008-Current Drive Axle Shoe Kit (includes 4 x Shoes 8972010610)	\$509.15
8982927610	NPS MY2008-Current Steer Axle Brake Drum	\$328.45
8970812192	NPS MY2008-Current Drive Axle Brake Drum	\$265.35



Disc Brake Rotors (each)

8981710330	NL* MY2008-Current - Steer Axle	\$364.05
8973872290	NN*/NPR MY2008-Current - Steer Axle	\$364.05
8982488970	NN*/NL* MY2008-Current - Drive Axle	\$348.20
8982488980	NP* MY2008-Current - Drive Axle	\$411.20
8981052720	NQ* MY2008-Current - Steer Axle	\$457.05
8982927430	NQ* MY2008-Current - Drive Axle	\$561.30

*Applies to all models in range.



Batteries

CYB123842	N Series NS70LH MY2019 - Current	\$214.00
CYB124841	N Series NS70LB MY2008 - 2018 (BVP Option)	\$171.00

Headlight Assembly

8982413260	N Series MY2008-Current - LHS	\$220.45
8982413250	N Series MY2008-Current - RHS	\$220.45

Turn Signal Light Assembly

8981554590	N Series MY2008-2021 - LHS	\$70.85
8981554580	N Series MY2008-2021 - RHS	\$70.85
8975579110	N Series MY2022-Current - LHS	\$107.20
8975579100	N Series MY2022-Current - RHS	\$107.20

Radar Cover Assembly

8976598991	N Series MY2022-Current - LHS	\$111.95
8976598981	N Series MY2022-Current - RHS	\$111.95



Isuzu Trucks Joins PremiAir Racing as Major Sponsor for 2025 Supercars Season

Supercars Championship Calendar

Rd	Location	Event	Date
1	Sydney Motorsport Park (NSW)	Sydney 500	21-23 February
2	Albert Park (VIC)	Melbourne Super Sprint	13-16 March
3	Taupo Motorsport Park (NZ)	Taupo Super 440	11-13 April
4	Symmons Plains Raceway (TAS)	Tasmania Super 440	9-11 May
5	Wanneroo Raceway (WA)	Perth Super 440	6-8 June
6	Hidden Valley Raceway (NT)	Darwin Triple Crown	20-22 June
7	Reid Park Street Circuit (QLD)	Townsville 500	11-13 July
8	Queensland Raceway (QLD)	Ipswich Super 440	8-10 August
9	The Bend Raceway (SA)	The Bend Enduro	12-14 September
10	Mount Panorama (NSW)	Bathurst 1000	9-12 October
11	Surfers Paradise (QLD)	Gold Coast 500	24-26 October
12	Sandown Raceway (VIC)	Sandown 500	14-16 November
13	Adelaide Street Circuit (SA)	Adelaide Grand Final	27-30 November

Isuzu Australia Limited (IAL) is gearing up for an exciting 13-round Supercars Championship

Isuzu Australia Limited (IAL) is gearing up for an exciting 13-round Supercars Championship season alongside PremiAir Racing and the Chevrolet Camaros of James Golding and new recruit Richie Stanaway.

This marks the second season that Isuzu Trucks and Isuzu Power Solutions will feature on the cars of the Peter Xiberras-owned team, based on the Gold Coast. Following a successful first year with the team, Isuzu will be expanding its involvement, becoming a major team sponsor for the full 2025 supercars season.

The 2025 season will see the team racing across Australia and New Zealand, starting with the opening round at Sydney Motorsport Park, and including major events like the Formula 1 Grand Prix support race at Melbourne's Albert Park, the iconic Bathurst 1000, and the season-ending Grand Final on the streets of Adelaide.

With a strong driver line-up, top-tier team management, expert engineering, and skilled mechanics all coming from PremiAir Racing, Isuzu is excited for the season ahead.

A key element will be the continuation of the Isuzu Technician placement program. This program enables eight technicians from Isuzu's dealer network to join the race team on selected weekends, providing them with valuable hands-on experience.

In addition to its support for PremiAir Racing, Isuzu will also launch several activations associated with the new truck model release later in the year.

"Isuzu Australia is thrilled to once again team up with PremiAir Racing in 2025," said John Walker, Head of Marketing and Customer Experience at Isuzu Australia.

"PremiAir Racing shares our commitment to excellence, and in the competitive world of Supercars, it offers a fantastic opportunity for Isuzu Trucks and Isuzu Power Solutions to engage with our mutual audiences.

"2025 is a milestone year for Isuzu Trucks, with all new models set to hit the Australian market later in the year, PremiAir Racing will play a vital role in our showcases on and off the track.

"The technician program also has great benefits for our Dealer Network technicians, giving them insights and new skills that they can take back to their roles within the Isuzu network—all of which flow through to providing a better service for our customers."

PremiAir Racing owner Peter Xiberras is equally excited about the upcoming season.

"It's an exciting year for both PremiAir Racing and Isuzu—we couldn't be happier about heading into 2025," said Mr Xiberras.

"The PremiAir group, has had a long-standing relationship with Isuzu. Our fleet of Isuzu Trucks, which is delivering for our business out on the road, is a testament to that partnership.

"We're also looking forward to once again having the Isuzu's technicians join us for selected race weekends; it's a great opportunity for collaboration, and I'm confident that all parties will work together towards success."

The 2025 season will introduce several changes to the Supercars Championship. Queensland Raceway returns to the calendar, expanding the series to 13 rounds for a total of 34 races—10 more than in 2024. An Endurance Cup will be awarded for the two-driver races at The Bend in September and Bathurst in October.

The biggest change is a football-style finals format. After the Bathurst race, the top 10 drivers' points standings will be reset, and the championship will be decided over the final seven individual races.

The season culminates with the top four drivers battling it out on the streets of Adelaide on November 30.

"We aim to win any time we race, plus now with the new finals format, PremiAir Racing could be in the hunt for a title," said Mr Xiberras.

"Even as drivers are eliminated from title contention, all 25 cars will compete in every race, so the intensity will be off the charts."

"We're looking forward to what will be an incredible year for PremiAir Racing and Isuzu in 2025!"

Peter Xiberras,
PremiAir Racing Owner

F/FX/FY-SERIES

Genuine Parts

For genuine peace of mind, maintain your Isuzu F/FX/FY-Series Truck by using Isuzu Genuine Parts which are developed and manufactured to stringent quality standards, providing you with maximum productivity, performance, and future re-sale value. All backed by a 12-month unlimited kilometre parts-only warranty, or 3-year unlimited kilometres parts & labour warranty when fitted by an authorised Isuzu Trucks dealer, because reliability is everything!

Mirror Head Assembly

92075042	FR*/FS* with 19" Manual Main & Spotter Mirror - LHS	\$171.20
92075041	FR*/FS* with 19" Manual Main & Spotter Mirror - RHS	
92075046	FR*/FS* with 19" Electric Main & Spotter Mirror - LHS (Premium models)	\$264.90
92075045	FR*/FS* with 19" Electric Main & Spotter Mirror - RHS (Premium models)	
92075048	FT*/FV*/FX*/FY* with 22" Electric Main & Spotter Mirror - LHS	\$277.35
92075047	FT*/FV*/FX*/FY* with 22" Electric Main & Spotter Mirror - RHS	

*Applies to all models in range.

Door Assembly

8982605980	F-Series MY2008-Current - LHS	\$1,254.60
8982605971	F-Series MY2008-Current - RHS	

Side Combination Lamp Assembly

8980397772	FR*/FS* MY2015-Current - LHS	\$100.10
8980397762	FR*/FS* MY2015-Current - RHS	
8974101813	FX*/FY*/FT*/FV* MY2008-Current Left Hand Side (excluding FTS)	\$55.60
8974101804	FX*/FY*/FT*/FV* MY2008-Current Right Hand Side (excluding FTS)	

*Applies to all models in range.

Step Panel Assembly

8980373265	FR*/FS* MY2008-Current - LHS (excluding FSS)	\$150.00
8980373255	FR*/FS* MY2008-Current - RHS (excluding FSS)	
8980699773	FX*/FY*/FT*/FV* MY2008-Current - LHS (Cab-mounted Step excluding FTS)	\$163.45
8980699763	FX*/FY*/FT*/FV* MY2008-Current - RHS (Cab-mounted Step excluding FTS)	

*Applies to all models in range.



Starter Motor Assembly

8982425891	FR*/FS* MY2008-Current with 4HK1 (240hp) Engine - 24V 5.0kW	\$1,158.75
8982616690	FR*/FS* MY2008-Current with 6HK1 (260hp) Engine - 24V 5.0kW	\$1,158.75
8981412063	FT*/FV* MY2008-Current with 6HK1 (300hp) Engine - 24V 5.0kW	\$905.25
8982222033	FX*/FY* MY2008-Current with 6UZ1 (350hp) Engine - 24V 5.5kW	\$1,201.15



Alternator Assembly

8976880350	FR*/FS* MY2008-Current with 6HK1 (260hp) Engine - 24V 60amp	\$1,303.00
-------------------	---	-------------------



Batteries

CYB125840	F-Series N100 12V 740CCA Maintenance Free	\$275.00
CYB125842	F-Series N100L 12V 740CCA Maintenance Free	

Diesel Particulate Filter (DPF)

8976080574	FR*/FS* MY2008-Current with 4HK1 (240hp) & 6HK1 (260hp) Engine (Filter only)	\$2,905.40
8976080563	FT*/FV* MY2008-Current with 6HK1 (300hp) Engine (Filter only)	\$3,873.80



ISUZU GENUINE

Accessories

Isuzu Genuine Accessories are designed to improve your total driving experience through the enhancement of your truck's practicality and style. All Isuzu Accessories are designed and manufactured to meet Isuzu's rigorous engineering standards.

Heavy-Duty Canvas Seat Covers

Ultra-hard wearing waterproof seat cover tailored to your Isuzu Truck, offering easy fitment and maximum surface protection of your seats.

92957917	F-Series with ISRI 6860/875 MY2008-Current Driver Seat Only	\$164.80
92957347	NL*/NM* MY2008-2021 - Driver & Passenger Seat	
92958624	NL*/NM* MY2022-Current - Driver (Suspension) & Passenger Seat	
92957344	NN*/NP*/NQ* MY2008-2015 - Driver (Suspension) & Passenger Seat	\$242.60
92955658	NN*/NP*/NQ* MY2015-Current - Driver (Suspension) & Passenger Seat	
92957341	NN*/NP*/NQ* MY2008-Current - Rear Seat	

*Applies to all models in range.



Rubber Floor Mats

Durable rubber matting tailored to the footwell of your Isuzu Truck for seamless fitment and ultimate protection of the floor lining.

5867131570	NL*/NM* MY2008-Current	
5867130740	NN*/NP*/NQ* MY2008-Current	
1867231010	FR*/FS* MY2008-Current	\$72.50
1867231022	FT*/FV* MY2008-Current	
1867130771	FX*/FY* MY2008-Current	

*Applies to all models in range.



Slimline Weathershield Set

5867602930	N/F/FX/FY Series MY2008-Current	\$193.50
------------	---------------------------------	----------



Headlight Protectors

92956090	All N-Series & FR/FS MY2008-2022	\$92.40
92958598	All N series 2022 - Current	\$107.25
92956379	FTR, ALL FV* Models	\$114.55



N-Series Towbar Assembly

Isuzu's Genuine Towbar Assembly for the N-Series range is rated to 3.5 tonnes and upgradable to 4.0 or 4.5 tonnes with 70mm Towball. Designed by Isuzu's Product Development Centre and manufactured in Australia, these towbars ensure high precision and durability. The modular design minimises chassis interference and meets Australian Design Rules (ADR) standards. This addition caters to customer demand for industry-specific modifications, enhancing the versatility and towing capacity of Isuzu Trucks while maintaining compliance and reliability.

92958031	NPR/NQR Cab Chassis (MWB)	
92958032	NNR	
92958033	NPR/NQR Tipper	
92958034	NPR/NQR Cab Chassis (SWB/MLWB/LWB/AH/Crew Cab)	\$985
92958035	NPS	
92958036	NLR/NLS/NMR (excl. MWB Traypack)	
92958037	NLR/NLS/NMR Tipper	
92958038	NLR/NMR Traypack (MWB)	
92958041	4,500kg rated 70mm Towball & Tongue Upgrade for NPR, NPS, NQR models.	\$799
92958049	4,000kg rated 70mm Towball & Tongue Upgrade for NLR, NLS, NMR, NNR models.	
92955674	Electric Trailer Brake Control Kit - 24 Volt	\$749



ISUZU SERVICE AGREEMENTS

Zero-stress servicing. Brought to you by Isuzu.

No business wants big, unexpected bills. But with an Isuzu service agreement, you can flatten your truck servicing costs into a predictable monthly payment (or upfront fee with Isuzu Essentials). You'll also be part of one of Australia's biggest dealer networks, so you can book a service at locations around the country. With the new Chain of Responsibility laws, proper servicing will protect your business. Lastly, service agreements come with Isuzu Care, Australia's most comprehensive truck customer care programme. To find out more, see your nearest dealer or visit isuzu.com.au/care-support/service-agreements.



Ask your local Isuzu dealer about which service agreement is right for you.



- Isuzu Essentials
- Isuzu Essentials Plus
- Isuzu Total
- Isuzu Heritage

NARVA® THE VISION TO GO FURTHER

LED HYBRID DRIVING LIGHTS

71732	ULTIMA MK3 180 LED HYBRID DRIVING	\$400.40
71742	ULTIMA MK3 215 LED HYBRID DRIVING	\$514.70

COMBINATION LAMPS

97302	9-33V MDL 73 S/T/I LAMP	\$116.50
97310	9-33V MDL 73 S/T/I/R LAMP	\$123.75

LED BEACON LIGHTS

85660A	12/24V LED BEACON FLANGE (A)	\$77.20
85668A	12/24V LED BEACON MAG MOUNT(A)	\$107.05

HEADLIGHT GLOBES

48740BL2	H11 24V 70W PLUS 100 BL(2)	\$98.95
48730BL2	H7 24V 70W 24V PLUS 100 BL(2)	\$71.20

LED GLOBES

18444	H4 12/24V LED CONVERSION KIT	\$150.25
18444H	H4 12/24V HP HIGH BEAM	\$151.45
18447	H7 12/24V LED CONVERSION KIT	\$122.10
18447H	H7 12/24V HIGH BEAM ONLY LED	\$122.10



SCAN THE QR CODE FOR THE FULL RANGE OF NARVA PRODUCTS

DEALER NETWORK

Isuzu has Australia's biggest dealer network. If you book into any Isuzu Service Centre nationwide, they'll have access to your truck's comprehensive service history



ISUZU CARE

Australia's most comprehensive truck customer care programme, Isuzu Care has a team of service specialists to ensure that owning your Isuzu is a great experience. To contact them, just freecall 1800 035 640.



STREAMLINED PROCESS

Maintaining your trucks under a Priority Service Agreement is quick and easy. With prearranged payments, you won't have to worry about the hassle of arranging finances before your drivers drop off and pick up trucks on the day of the service.



CHAIN OF RESPONSIBILITY & NHVR

With a Priority Service Agreement, you're clearly demonstrating that you've pre-planned your fleet maintenance and have put established procedures in place. That means establishing NHVR (National Heavy Vehicle Regulator) fleet maintenance requirements couldn't be easier.

ONLY THE BEST SERVICE AND PARTS

Using a combination of the latest diagnostic software and Isuzu-approved parts, our qualified Isuzu technicians will keep your truck in tip-top condition.



REDUCE TOTAL COST OF OWNERSHIP

Better servicing helps reduce unforeseen overheads and results in more reliable, fuel-efficient trucks. And that means less downtime and lower total cost of ownership.



FACTORY TRAINED TECHNICIANS

Why would you trust your Isuzu to anyone but an Isuzu-trained technician? With meticulous training tailored specifically to Isuzu trucks, our team carries out servicing and repairs to manufacturer-documented standards (and that means the highest level possible!).

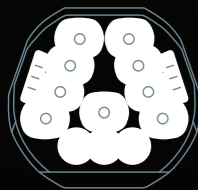


RESALE VALUE

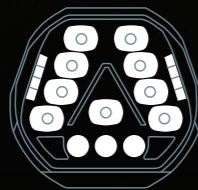
Thanks to the comprehensive service history you receive from Isuzu, you'll always get the best price for your truck when the time comes for an upgrade.

STAND OUT WITH ANTARES

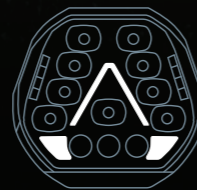
TAKE CONTROL OF YOUR LIGHTING WITH A MULTITUDE OF HELLA LIGHTING TECHNOLOGIES FOR SAFETY AND VISIBILITY, DAY AND NIGHT.



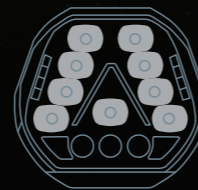
HIGH OUTPUT MODE



LOW OUTPUT MODE



DAYTIME RUNNING LIGHT



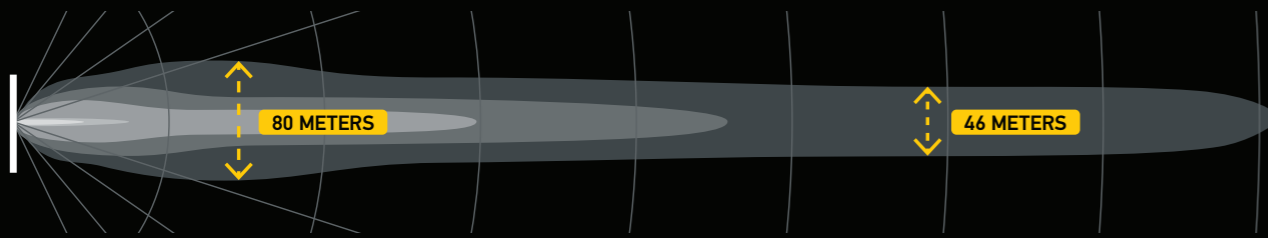
POSITION LIGHT

The Hella Antares integrates lighting techniques mastered in collaboration with the largest automotive brands and decades of Australia's harshest driving conditions, creating a composite beam that delivers incredibly constant and impressive output:

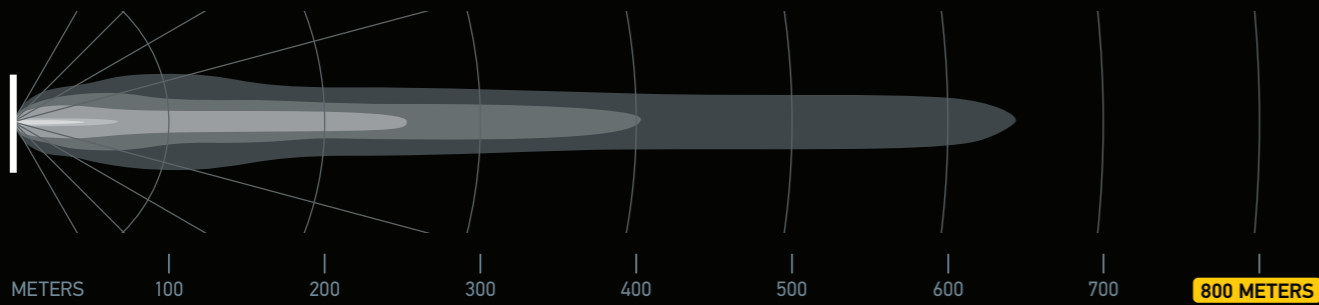
- 80m wide beam exceeds 150m distance with the ultra-wide specific LED clusters
- Impressive mid-range width of 46m that exceeds 650m distance with the umbrella LED optic
- Precision Projector LED gives a total distance exceeding 800m
- All at the industry standard 1 Lux.

1F0358228871
\$799.95

HIGH OUTPUT MODE



LOW OUTPUT MODE (ECE)



ISOLUX = 2 LIGHTS

DURALED® BUILT TO LAST

HELLA's DuraLED® range with integrated DT connectors, provide ultimate reliability and efficiency that stands the test of time.

Designed for both OEM production and fleet operations, HELLA's innovative solutions ensure your vehicles stay on the road, minimising downtime and maintenance costs.



1G0996776001
Worklamp Module 70 Series
W/DT 1000 Lumen
\$90.20



1GA996588001
Worklamp Powerbeam S
Series W/DT 1000 Lumen
\$94.80



2074
DuraLed Heavy Duty Front
Position/ End outline Lamp
with DT Connector
\$19.95



2073
DuraLed Heavy Duty Side
Marker lamp
with DT Connector
\$17.50



2559
Number Plate Lamp
0.5M K multivolt
\$33.30



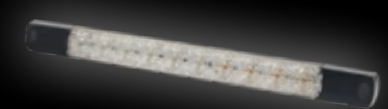
2076
DuraLed Heavy Duty Cab
Marker/ Supplementary Side
Direction Lamp
with DT Connector
\$17.50



2VP015075001
Duraled combi-SR stop/
rear position/rear indicator/
Reverse lamp W/Retro
Reflector with DT
\$158.25



237512V
Slim surface mount
combination lamp 12v
\$60.90



Australia

ISUZU GENUINE

Filtration & Lubricants



Genuine Service Filter Kits

Included are oil filters, fuel filter/s, sump plug washer, sediment filters and PCV filters (where applicable).

92958223	NL*/NM*/NN* with 4JJ1 Engine MY2008-Current	\$136.55
92958224	NP*/NQ* with 4HK1 Engine MY2008-Current	\$164.20
92958225	FR*/FS* with 4HK1 Engine MY2016-Current	\$208.80
92958226	FR*/FS*/FT*/FV* with 6HK1 Engine MY2016-Current	\$189.40
92958227	FX*/FY* with 6UZ1 Engine MY2016-Current	\$306.10

*Applies to all models in range.

Isuzu NextGen Plus 10W-40 CK-4 E8/E11 Engine Oil

Premium Engine Oil that adheres to the latest E8/E11 ACEA specification and approval process. Using a carefully chosen base stock formulation and premium additives that meet the demands of Euro 5 & 6 engine requirements, it has been engineered to reduce oxidation and assist with piston cleanliness, decreasing soot and carbon build-up. Recommended for use in Isuzu Trucks and has wider appeal across a range of other commercial vehicles including those with Exhaust Gas Recirculation (EGR), Diesel Oxidation Catalyst (DOC) systems and Diesel Particulate Filter (DPD) exhaust after-treatment systems, making it a staple for any automotive workshop.

92958803	5 Litre Bottle	\$50.30
92958804	20 Litre Drum	\$187.15
92958805	205 Litre Drum	\$1,733.85
92958806	1000 Litre IBC	\$7,745.45

IPS Filter Kits

92958561	Hitachi Excavator - ZX230, ZX200 & ZX270 fitted with a 4HK1 engine	\$102.30
92958884	Isuzu Genset GS020PTY	\$83.60
92958885	Isuzu Genset GS037PTY	\$103.40



How Do You Like Them Apples? Plunkett Orchards & Isuzu

General Manager of Plunkett Orchards, Andrew Plunkett (right), with Maintenance Manager Brenton Rae (left)

If the price of apples and oranges is something that can never be agreed on, at least there's nothing like the pleasure of biting into a crisp, fresh apple. It's a sensation so poignant that one of Australia's leading fruit suppliers, Plunkett Orchards, is needing to meet heightened demand with a revamped irrigation system driven by Isuzu Power Solutions.

Situated in the golden growing belt of the Goulburn Valley, the orchards span 235 hectares of prime land, producing substantial quantities of fresh fruit for distribution across Australia and to 29 countries internationally. The first trees were planted in 1889 by Carl and Hannah Lenne, who laid the foundation for the orchards' success today.

Currently, the orchards are led by Andrew Plunkett, great-grandson of the original founders and a fourth-generation farmer with a forward-thinking vision. Plunkett Orchards cultivates popular apples such as Granny Smith, Pink Lady, Gala, Sundowner, Kanzi, and Rockets, along with various pears.

"Everyone wants fresh fruit these days, compared to the many years of canned fruit we enjoyed," said Andrew. "People are eating a wide range of varieties, and we need to meet that demand."

To ensure the highest quality apples reach their customers, they have invested heavily in sorting and packaging technology. This investment, though significant, promises a substantial return. "Our process includes scanning every piece of fruit, determining up to 45 different uses for any apple," explained Andrew. "The apples are then separated and packed according to customer specifications."

Maintaining the apples in optimal condition is a computer-controlled irrigation system, powered by a 3.0-litre common rail 4JJ1TYBW01 industrial engine from Isuzu Power Solutions (IPS). Plunkett Orchards' irrigation system adapts to changing climatic conditions, watering the base of each tree and utilizing an overhead misting system during the active growing season. Water is sourced from the Shepparton Irrigation Area, part of the Goulburn-Murray Irrigation District (GMID), which accounts for 70 percent of Victoria's water storage.

To ensure reliable power over the demanding Australian summer, Plunkett Orchards recently upgraded to a new Isuzu industrial engine. The 4JJ1TYBW01 is part of the IPS 'Premium Made-to-Stock' range, equipped with exhausts, air systems, control units, and other accessories for immediate operation.

"We had an existing Isuzu 4JG1TPW powerplant that had been in operation for well over 15 years," said Maintenance Manager Brenton Rae. "But with the long hot summers, we needed a reliable irrigation engine power package. The new engine offers greater running efficiencies, crucial as it runs both the irrigation and water spray system to keep the fruit cool 24/7 during summer."

A key feature of the 4JJ1TYBW01PRM engine package is the advanced Murphy MPC10 controller, which offers remote start, stop, and RPM control. This controller allows Plunkett Orchards to closely monitor their critical systems with simple integration into their management system, providing additional peace of mind.

"This system has allowed for far greater flexibility with the irrigation of the orchard," said Andrew. "Having the ability to check and operate the system remotely is like having an extra set of hands."

Andrew also praised Isuzu's customer service and engineering team for their assistance in determining the best configuration based on Plunkett Orchards' requirements. "Within half an hour, I had a full run-down on our previous setup and a detailed proposal for its replacement. The whole process, from initial contact to solution implementation, was completed in just a few days."

"As a fruit grower, there are many challenges—it's about how you meet those challenges and make the right decisions quickly. Working with IPS was undoubtedly the right decision for us."

Suspension

King Pin Kits

5878323990	NNR 2008 - Current, NPR 2008-2013, NQR 2008-2015	\$234.40
5878324001	NPR 2014 - Current	\$302.70
92958451	NPS Only 6-6.5 ton GVM	\$612.05



Heavy Duty Spring Upgrade Kits

92956921	FXD, FXR, FXL, FXZ, FXY	\$3,171.80
92956922	FVD, FVM, FVR, FVL, FVY*, FVZ	\$3,145.95
92956923	FTR	\$2,993.05
92956924	FSR, FSD	\$2,354.20
92956925	FRR, FRD	\$2,307.50



Spring Packs

8982125170	FY 4 leaf 2nd (Leaf SUS)	\$2,391.80
8982125160	FY 3 leaf 1st (Leaf SUS)	\$1,784.45
8982257320	FY 3 leaf 1st (AIR SUS)	\$1,817.50
8982257340	FY 4 leaf 2nd (AIR SUS)	\$1,949.40
8980799100	NP 6 Leaf (6.0-6.5T) LH	\$1,023.35
8980799120	NP 6 Leaf (6.0-6.5T) RH	\$1,073.50
8980799220	NP 6 Leaf (7.5-8.0T) RH	\$1,252.85
8980799200	NP 6 leaf (7.5-8.0T) LH	\$1,096.60
8980694830	FVZ Front	\$1,754.50
1513108801	FVZ Rear	\$2,423.30



All Makes

PROJECTA



Projector® Jump Starter Packs

IS920	12 Volt 900 Amp Emergency Jump Starter	\$145.65
IS1500	12 Volt 1500 Amp Lithium Jump Starter	\$618.10
IS2000	12/24 Volt 2000 Amp Professional Jump Starter	\$635.15
IS5000	12/24 Volt 5000 Amp Professional Jump Starter	\$2,117.05

REDARC



REDARC® In Vehicle Dual Battery Chargers

BCDC1220	12 Volt 20 Amp DC/DC 3-Stage	\$500.45
BCDC2420	24 Volt 20 Amp DC/DC 3-Stage	\$740.65



REDARC® Tow-Pro Elite V3 Electric Brake Controller

EBRHACCV3	Kit for various makes & models of vehicles	\$290.70
-----------	--	-----------------

HENDRICKSON



Hendrickson Torque Rods

62000555	Torque Rod 555mm HAS 230/400/460/461	\$154.85
62007365	Torque Rod 365mm Ultra Rod straddle type	\$183.75
62000630	Torque Rod 630mm One Piece Ultra Rod	\$153.05
62011360	Torque Rod 360mm Straddle Type	\$201.80



Hendrickson Bushes

47691000L	Bush; Radius Rod	\$28.70
-----------	------------------	----------------



Hendrickson Main Support Member

53422000	48mm Thickness	\$496.20
56946000	50mm Thickness	\$606.55

All Makes



Ancra® Squat Bottle Jacks

ANC012	Squat Bottle Jack w Handle - 12 T	\$80.35
ANC020	Squat Bottle Jack w Handle - 20 T	\$116.30



Ancra® Pallet Angles

FLCP40001040MM	1040mm - Tiedown Strap type	\$20.30
3478L	130mm - Chain type	\$18.80



Ancra® Ratchet Tie Downs

50000-12	50mm x 9m Ratchet Tie Down Strap	\$17.45
50000-12-11MTR	50mm x 11m Ratchet Tie Down Strap	\$23.75



Watts Stainless Steel Horns

1000-12	12" 12/24 Volt Dual Chrome Electric Yankee Horn	\$47.05
1000-16	16" Stainless Steel Electric Dual Horn	\$150.35
1000-24N	24" Round Stainless Steel Horn - Single	\$144.80
1000-25N	25" Square Stainless Steel Horn - Single	\$150.50



Watts Wheels® Chrome Hubcaps & Nut Covers

7103	8" Hubcap	\$9.30
8074BP	33mm Nut Cover - Pack of 10	\$11.70
802430BP	41mm Nut Cover - Pack of 10	\$12.40



Watts Wheels® Stainless Steel Wheel Simulator Kit

ISRT225335TS10	To suit Twin Steer with 10 Stud 335PCD Wheels	\$1,723.05
----------------	---	-------------------



Fleetguard® Air Filters

AF1968M	To suit Kenworth, Freightliner, Western Star	\$96.25
AF1969M	To suit Mack	\$131.80
AF351KM	To suit Kenworth, Komatsu	\$69.50
AF887KM	To suit Kenworth	\$116.50



Fleetguard® 4WD Filter Kits

MK14283	Toyota Hilux GUN123R/126R/136R/122R/125R with 2.4L & 2.8L Turbo Diesel Engine (1GD-FTV) MY2015-Onwards	\$68.30
MK13940	Toyota Landcruiser 200 Series VDJ200 with 4.5L V8 Turbo Diesel Engine (1VD-FTV) MY2007-Onwards	\$72.60
MK13458	Toyota Landcruiser 70 Series VDJ76R/78R/79R with 4.5L V8 Turbo Diesel Engine (1VD-FTV) MY2007-Onwards	\$63.95
MK14280	Ford Ranger (PX), Everest (UA) Mazda BT-50 (UPOY) with 2.2L & 3.2L Turbo Diesel Engine MY2011-Onwards	\$69.30
MK14314	RAM Truck 2500/3500 with Cummins ISB 6.7 I6 Turbo Diesel Engine MY2013-Onwards	\$300.95



Nulon® Start Ya Bastard Instant Engine Starter Spray

SYB150	150g Aerosol	\$7.85
SYB350	350g Aerosol	\$11.05



Nulon® Shift Ya Bastard Multi-Purpose Lube Spray

SHIFT150	150g Aerosol	\$6.60
SHIFT550	400g Aerosol	\$9.30

All Makes



Eaton® PS-386 Synthetic Transmission Lubricant & Genuine Filters

5564543	18.9 Litre Drum (5 Gallons)	\$594.00
4304827	Oil Filter Element	\$40.05
17237	Oil Filter Element (Chassis Mounted)	\$38.20



Timken® Wheel Bearing Sets

SET401	Outer Bearing Set - R Drive Axle (580/572)	\$68.90
SET403	Inner Bearing Set - R Drive Axle (594A/592A)	\$81.95
SET406	Outer Bearing Set - FF Steer Axle (3782/3720)	\$38.55
SET409	Outer Bearing Set - FF Steer Axle (45280/45220)	\$69.70
SET413	Inner & Outer Bearing Set FF steer & N Trailer (HM212049/HM212011)	\$55.85
SET414	Inner Bearing Set - N Trailer Axle (HM218248/HM218210)	\$84.50
SET415	Inner & Outer Bearing Set P Trailer (HM518445/HM518410)	\$96.65



Stemco® Aluminium Hubcaps

343-4009	Trailer Axle 5-1/2" Bolt Circle (SKF1644)	\$31.90
343-4024	Steer Axle 4-1/2" Bolt Circle (SKF1612)	\$64.75
343-4046	Steer Axle 5-1/2" Bolt Circle (SKF1643)	\$63.50
359-5995	Window Kit	\$13.25



SKF® Scotseal Classic Wheel Seals

35066	Scotseal Classic - Steer Axle	\$25.55
46305	Scotseal Classic - Trailer Axle	\$27.40
47697	Scotseal Classic - Drive Axle	\$29.30



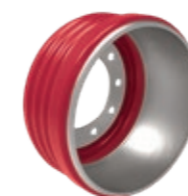
Meritor® Q-Plus 16.5" X 7" Brake Shoe Kit

KSMA2124707QP	MA212 Standard Lining (21,000 lbs GAWR)	\$126.00
KSMA3124707QP	MA312 Premium Lining (23,000 lbs GAWR)	\$169.00



Meritor® Red Brake Chambers

MBC2430	Size 24/30 2.5" Stroke - Standard	\$56.50
MBC3030	Size 30/30 2.5" Stroke - Standard	\$56.50
MBC3636	Size 36/36 2.5" Stroke - Standard	\$120.90



Meritor® Red Cast Brake Drums 335mm PCD

MBD119	Steer Axle - 16.5" x 5" 335mm PCD 10 Stud	\$219.85
MBD177	Steer Axle - 16.5" x 6" 335mm PCD 10 Stud	\$231.20
MBD192	Drive Axle - 16.5" x 7" 335mm PCD 10 Stud	\$184.45



Meritor® Genuine Tie Rod Ends

R230068	Meritor FG941/MFS66 - Left Hand Thread	\$53.50
R230069	Meritor FG941/MFS66 - Right Hand Thread	\$53.50
R230072	Meritor MFS73/FL941 - Left Hand Thread	\$68.15
R230073	Meritor MFS73/FL941 - Right Hand Thread	\$68.15



Meritor® Red Brake S-Cams

MCS7536	11-9/16" Length - Right Hand Side (Meritor 2210V7536)	\$44.50
MCS7537	11-9/16" Length - Left Hand Side (Meritor 2210W7537)	\$44.50
MCS7452	9-5/16" Length - Right Hand Side (Meritor 2210P7452)	\$51.00
MCS7453	9-5/16" Length - Left Hand Side (Meritor 2210Q7453)	\$51.00
MCS7670	15-3/16" Length - Right Hand Side (Meritor 2210Z7670)	\$51.00
MCS7671	15-3/16" Length - Left Hand Side (Meritor 2210A7671)	\$51.00



Meritor® Automatic Slack Adjusters

E-6993B	1-1/2" x 28 Spline - Straight Arm Length 5" or 6" (Crewson MK22103S)	\$98.50
E-6994B	1-1/2" x 28 Spline - Straight Arm Length 5-1/2" or 6-1/2" (Crewson MK22102S)	\$98.50

ISUZU

Legacy

Isuzu has a comprehensive range of parts to suit older model Isuzu Trucks, all manufactured to high standards and backed by a 12-month, unlimited kilometre parts warranty. Reliability is Everything!

BVP Filter Kits

92955807	N-Series with 4HE1 Turbo Intercooled Engine (SiTEC 130/140/145/170)	\$36.30
92955808	N-Series with 4HE1/4HF1/4HG1 Engine (SiTEC 110/115/120 excluding NPS)	\$33.05
92955811	N-Series with 4HK1 Engine (SiTEC 150/175)	\$44.85
92955812	F-Series with 6HH1 Engine (SiTEC 175/200)	\$53.20
92955815	F-Series with 6SD1 Turbo Engine (SiTEC 270)	\$68.25
92955816	F-Series with 6SD1 Turbo Engine (SiTEC 275)	\$65.65
92955818	F-Series with 6HK1-TCS Engine (SiTEC 255)	\$44.05
92955820	C&E Series (Giga) with 6WF1/6WG1 Engine (SiTEC 385/425 from 01/03/2004)	\$45.95

Engine Rebuild kit

92955224	6SD1 Sitec I 270 - Mechanical Inj)	\$3,720.20
-----------------	------------------------------------	-------------------

Engine Mount

1532253020	FV with 6SD1 05/2000 - 09/2007 REAR	\$226.95
-------------------	-------------------------------------	-----------------

Water Pump

1136500024	FV with 6SD1 05/2000 - 09/2007	\$521.75
-------------------	--------------------------------	-----------------

Clutch Kit

1876102001	FV with 6SD1TC and 15" ceramic clutch 05/2000 - 09/2007	\$1,069.00
-------------------	---	-------------------

Clutch Master Cylinder

1475002510	CX 03/2006 - onwards, EX 10/2007 - onwards	\$168.35
-------------------	--	-----------------

Clutch Slave Cylinder

1475700503	FR/FS, FT, FV/GV with MLD transmission 01/1996 - 09/2007	\$85.45
-------------------	--	----------------

Clutch Booster

1876100880	FV with 6SD1 / Eaton Trans 01/1996 - 09/2007	\$372.45
-------------------	--	-----------------



Corner Panel

1654815912	FR/FS 05/2000 - 09/07, FSS/FTS single cab 4/1996 - 09/2007 LH	\$395.15
1654815902	FR/FS 05/2000 - 09/07, FSS/FTS single cab 4/1996 - 09/2007 RH	\$377.35

Wheel Arch Fender (Grey)

1719961781	FTS single cab, FV/GV 05/2000 - 09/2007 LH	\$244.85
1719961771	FTS single cab, FV/GV 05/2000 - 09/2007 RH	\$244.85

Door Blister Fender

1712684291	FRR/FSR 05/2000 - 09/2007, FSS single cab 04/1996 - 09/2007, FTS 04/1996 - 09/2007, FV/GV 05/2000 - 09/2007 LH	\$117.60
1712684282	FRR/FSR 05/2000 - 09/2007, FSS single cab 04/1996 - 09/2007, FTS 04/1996 - 09/2007, FV/GV 05/2000 - 09/2007 RH	\$117.60

Window Regulator

1744181793	CX 03/2006 - onwards, EX 10/2007 - onwards, FR/FS/FT/FV/GV 05/2000 - 09/2007 LH	\$190.05
-------------------	---	-----------------

1744181783	CX 03/2006 - onwards, EX 10/2007 - onwards, FR/FS/FT/FV/GV 05/2000 - 09/2007 RH	\$190.05
-------------------	---	-----------------

Window Motor

1744181770	CX 03/2006 - onwards, EX 10/2007 - onwards, FR/FS/FT/FV/GV 05/2000 - 09/2007 LH	\$249.35
-------------------	---	-----------------

1744181760	CX 03/2006 - onwards, EX 10/2007 - onwards, FR/FS/FT/FV/GV 05/2000 - 09/2007 RH	\$249.35
-------------------	---	-----------------

Radiator Grille

1711188181	FT 05/2000 - 10/2002, FR/FS, FV/GV 05/2000 - 09/2007	\$307.20
-------------------	--	-----------------

Treadle Valve

8982227910	FTS, FV/GV 05/2000 - 09/2007	\$756.20
-------------------	------------------------------	-----------------

ISUZU

Legacy

Headlamp

1868301224 FR/FS/FT/FV/GV 05/2000 - 09/2007 LH **\$358.35**

1868301214 FR/FS/FT/FV/GV 05/2000 - 09/2007 RH **\$358.35**

Mirror Head

92074467 All F Series 05/2000 - 09/2007 without heated mirrors LH & RH **\$132.05**

Canvas Seat Cover Set

92957350 ISRI 6500 Driver **\$229.25**

Seat Belt

1756189242 FR/FS/FT/FV/GV 05/2000 - 09/2007 Passenger **\$317.45**

1756189232 FR/FS/FT/FV/GV 05/2000 - 09/2007 Driver **\$308.80**

Rubber Floor Mat

1884344400 F Series 1996 - 2007 **\$112.40**



ISUZU

Merchandise

Clearance, only while stocks last.



92958875
Isuzu N-Series
Toy Truck
(Not For Children Under 3 Years)
\$34.35



MDLF700P
Isuzu F-Series
Model Truck
\$23.95



92958799-800
Bar stool
(Red or Black)
\$78.95



92958099
Badge Cap
\$14.40



92958891
Deluxe Cooler Bag
(Charcoal)
\$57.60



92958677
Collapsible Cooler Bag
(Black)
\$61.65



92958768
Mudflap-style Bar Coasters
(Set of 6)
\$30.20



92958481
Multi-Purpose Tool
\$38.90



92957992
Isuzu Badge Beanie
\$14.40



92958312
Isuzu Trucks Backpack
\$47.90



92957582
Isuzu Stubby Skin
(Blue)
\$3.80



92958487 - 489
Isuzu Neo Hoodie
\$72.00



92955686 - 693
Hi-Vis Hoodie
(Various Sizes)
\$37.80



92958281 - 293
Mens & Ladies Snowy Vest
(Black - Various Sizes)
\$62.00



92955827 - 839
Mens & Womens
2-in-1 Jacket
(Black - Various Sizes)
\$145.20



92958770 - 776
Mens Puffer Jacket
(Black - Various Sizes)
\$69.25

ISUZU TRUCKS

Dealer Network

Isuzu has the largest truck dealer network in the country, with all 76 locations providing the highest quality Genuine Parts, backed by industry-leading support and warranty. This all means reduced downtime for our customers, freeing them up to focus on the important stuff. And when the parts are fitted by an authorised Isuzu technician, you'll be helping extend the working life of your truck and getting peace-of-mind that money just can't buy. Because reliability is everything!



Scan the QR Code to find your nearest Isuzu Trucks dealer.



Dealer/Branch



Authorised Service & Parts Outlet

